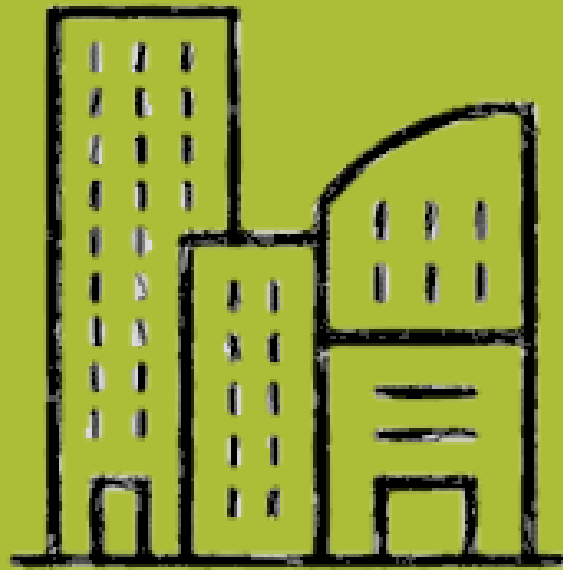


LEED



BD+C



# LEED

Leadership in Environmental and Energy Design (LEED)

- ✓ The most widely used green building rating system in the world
- ✓ Addresses all current topics:
  - Energy conservation
  - Water conservation and efficiency
  - Carbon dioxide (CO<sub>2</sub>) emission reduction
  - Indoor air quality improvement
  - Resource Management and awareness of their impacts
- ✓ Provides third-party certification (GBCI) that a building or community was designed and built using strategies aimed at improving its performance

## LEED RATING SYSTEMS

- Building Design and Construction (BD+C)
- Interior Design and Construction (ID+C)
- Operations and Maintenance (O+M)
- Neighborhood Development (ND)
- Cities and Communities



## LEED Certification

- ✓ 3 Minimum Program Requirements (MPRs), that must be met for any project to be eligible for LEED certification
- ✓ Number of Credit Categories: 9 for LEED BD+C & O+M, 8 for LEED ID+C, 4 for LEED ND
- ✓ Each Category includes Prerequisites Credits
- ✓ In order for a property to be certified, it must meet ALL the Prerequisites
- ✓ Each Credit gives specific points, the standard in total gives 110 points
- ✓ The certification level of the building is determined based on the total number of points earned according to the table below:
  - Certified min 40 points
  - Silver min 50 points
  - Gold min 60 points
  - Platinum min 80 points

## LEED CREDIT CATEGORIES<sup>1</sup>

Integrative Process (IP)<sup>2</sup>

Location and Transportation (LT)

Sustainable Sites (SS)<sup>3</sup>

Water Efficiency (WE)

Energy & Atmosphere (EA)

Materials and Resources (MR)

Indoor Environmental Quality (IEQ)

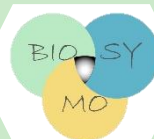
Innovation (IN)

Regional Priority (RP)

1. LEED ND & Cities and Communities are excluded

2. Not applicable to LEED O+M

3. Not applicable to LEED ID+C



# LEED BD+C: Commercial

(Building Design and Construction)

Applicable to the design & construction phase of a new building or a building's major renovation.

- ✓ Available for virtually all building types, with minor adjustments to the type of use. These are:
  - New Construction/ Major Renovation (includes all building types that do not fall into the following subcategories)
  - Core & Shell – refers to buildings that are less than 60% complete
  - Retail
  - Schools
  - Healthcare
  - Hospitality
  - Warehouses & Distribution Centers
  - Data Centers

## LEED BD+C: Homes

(Building Design and Construction)

Designed for residential buildings, it concerns the design and construction phase of a new building or a building's major renovation phase.

- ✓ It is divided into:
  - Homes and Multifamily Lowrise
  - Multifamily Midrise up to 8 floors
  - Multifamily buildings of more floors are included in BD+C: New Construction

# LEED ND

(Neighborhood Development)

Applicable to the development of a new or existing sustainable neighborhood, that includes residential or non-residential buildings or both.

- ✓ It is subdivided into:



- Design – concerns projects from schematic design to their construction
- Existing projects



# LEED ID+C

(Interior Design and Construction)

Applicable to the renovation and development of interior spaces .

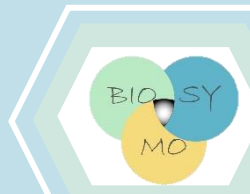
- ✓ Certification according to building type such as:
  - Commercial Interiors (includes all building types that do not fall into the following subcategories)
  - Hospitality
  - Retail

# LEED O+M

(Operations and Maintenance)

Focuses on the sustainable operation and maintenance of existing buildings.

- ✓ Applies to:
  - Existing buildings (includes all buildings types that do not fall into the following subcategories)
  - Retail
  - Warehouses & Distribution Centers
  - Hospitality
  - Data Centers
  - Healthcare
  - Schools



# Involved Roles in Certification

## LEED BD+C

### 2. Design Team

- Designs the project
- Co-defines LEED goals
- Compiles documentation according to the guidance of the LEED Consultant

### 1. Project Owner/ Project Manager

- Appoints the rest of the roles
- Decides the level of LEED certification
- Co-defines LEED goals
- Coordinates communication among parties

### 3. LEED Consultant (ideally LEED AP BD+C)

- Leads the team and defines LEED certification goals
- Visits the project for on-site inspection of compliance with the design and documents
- Gives directions for any corrective actions
- Collects and evaluates the required supporting certification documents

### 4. Construction Team

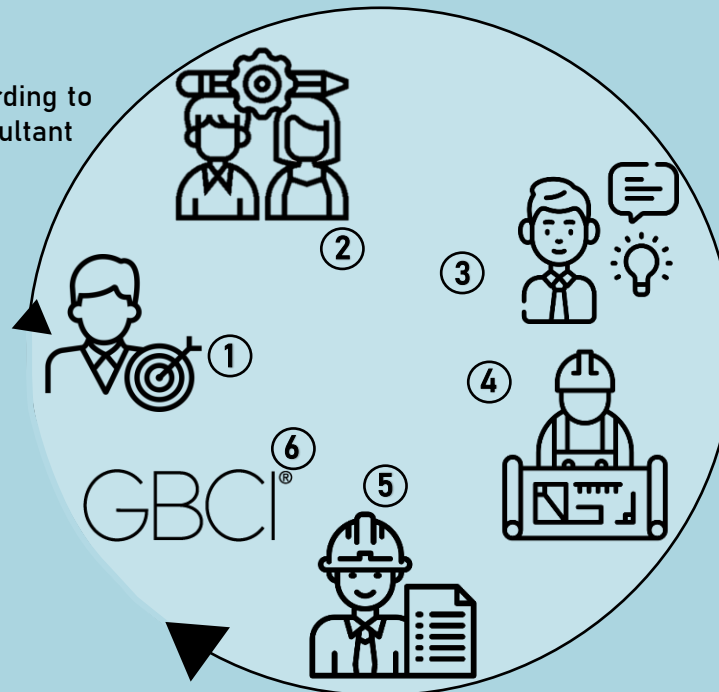
- Constructs the project
- Implements the approved design - indirectly ensures that the design points are implemented
- Meets the specifications of the construction prerequisites and credits

### 6. Green Business Certification Inc.

- Third-party certification body
- Certifies the role of LEED AP BD+C
- Certifies the project

### 5. LEED Coordinator (ideally LEED AP BD+C)

- Conducts and completes on-site inspections during the project
- Coordinates, directs and supervises the construction team to comply with the prerequisites and construction credits
- Collects the required documents regarding the prerequisites and construction credits
- Trains the general contractor's subcontractors regarding the LEED process



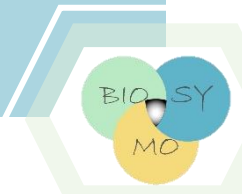
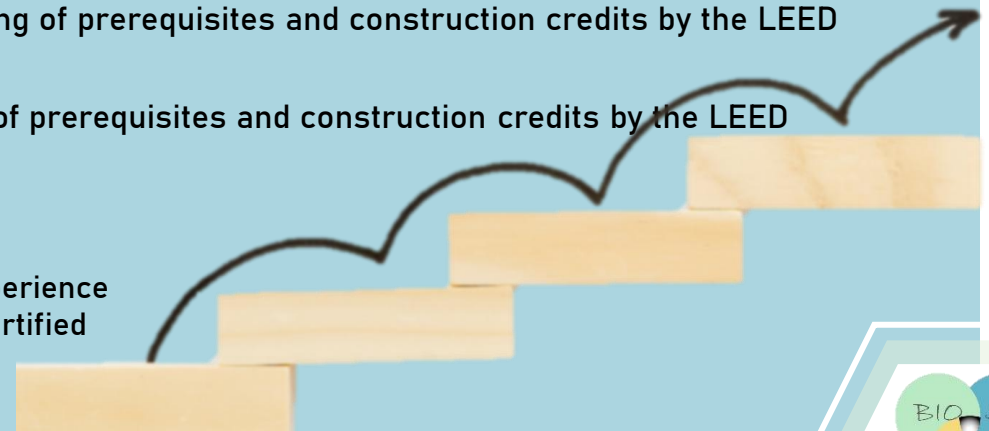
# Steps towards LEED BD+C Certification

## Certification Steps

- ✓ Project definition
- ✓ Collection of project information
- ✓ Team Formation Including Sustainability Consultant (LEED AP)
- ✓ Goal-Setting Workshop (LEED Charrette)
- ✓ Task Assignment (LEED Action Plan)
- ✓ Project Registration within LEED Online Platform
- ✓ Design and integration of LEED requirements on plans and project documents, a process that is performed in tandem with the design phase of the project
  - Regular meetings of the LEED Consultant with the Designers to provide guidance and keep track of the process
- ✓ Construction and reassurance of LEED prerequisites and construction credits
  - LEED Consultant visits the project for on-site inspection of compliance with the design and other documents
  - Regular on-site inspections and progress monitoring of prerequisites and construction credits by the LEED Coordinator
  - Collection of documents towards the achievement of prerequisites and construction credits by the LEED Coordinator
- ✓ Project submission for certification



Our company provides the required expertise and experience at the certification process, with trained personnel certified as LEED AP BD+C.





# LEED BD+C

## Credits Overview

v.4 LEED BD+C: Commercial

9 credit categories, 12 prerequisites, 50 credits

Credit Category	Prerequisites	Credits	Points
Integrative Process (IP)	0	1	2
Location and Transportation (LT)	0	8	16
Sustainable Sites (SS)	1	6	10
Water Efficiency (WE)	3	4	11
Energy & Atmosphere (EA)	4	7	33
Materials and Resources (MR)	2	5	13
Indoor Environmental Quality (IEQ)	2	9	16
Innovation (IN)	0	6	6
Regional Priority (RP)	0	4	4
Total	12	50	110

For more information and support regarding LEED BD+C certification, contact our team of experts!